

NatSKA Season 2022



Fulbeck

Saturday 7th May 2022

Permit Number: 123605

Club Id: 120693

Version 1

Final Instructions for the meeting organised by NatSKA Ltd Notice: Warning to the Public - Motor Sport can be Dangerous

"It is a condition of admission that all persons having any connection with the promotion and/or organisation and/or conduct of the meeting, including owners of the land and the drivers of the vehicles and passengers in the vehicles are absolved from all liability arising out of accidents causing damage, or personal injury (whether fatal or otherwise) however caused to spectators or ticket holders".

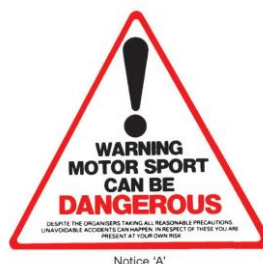
Entries are open to all Licensed drivers of teams who are current NatSKA Ltd. Members. The meeting is held under the rules and regulations set out in the NatSKA Ltd Handbook 2022.

Held under the General Regulations of the Motorsport UK (incorporating the provisions of the International Sporting Code of the FIA) and these Supplementary Regulations.

Despite the organisers taking all reasonable precautions, unavoidable accidents can happen. In respect of these you are present at your own risk.

The NatSKA Assessment of Risk for Covid 19 is now version Release 12.

All parts of the circuit to which the public have access are covered by the Road Traffic Act 1988. Anybody driving a vehicle in these areas must have the appropriate licence and insurance cover.



Notice 'A'

NatSKA Season 2022

OFFICIALS

Motorsport UK Chief Clerk of the course	Geoff Hitchings (\$)
Deputy Motorsport UK Clerk of the Course	Paul Heath (\$)
Motorsport UK Steward	Dave Brice
NatSKA Stewards	David Hull, Chris Brown, Nick Seward, Colin Fenwick, Paul Robinson
Secretary of the Meeting	Viv Pepperell
Assistant Secretary of the Meeting	Gail Fitchett
Steward & Team Leader Liaison Officer	Kevin Fitchett
Chief Motorsport UK Scrutineer	Chris Pepperell (^)
Motorsport UK Scrutineers	
Assistant Scrutineers	Daniel Gibaud (>) Stuart Hammond (>)
NatSKA Scrutineers	Gold Card Holders
Environmental Scrutineer	TBA
Transponder Supervisor	Toni Hammond
Start / Finish	Nicky Clarke (*) Lis Brown (*)
Chief Course Marshal	Richard Clarke (\$)
Course Marshals / Driving Standards Observers	Paul Oliphant (\$), Andy Jones (\$), Kevin Mooney (\$), Mark Davey (\$)
Paddock / Grid Marshals	Stuart Newton
Paramedic	RTC Medical (+)
Ambulance	RTC Medical
Chief Lap Scorer	Val Newton ®
Timekeeper	Gaynor Heath (*)
Child Protection Officer	Stuart Hammond / Lindsay Bott

^ = Judge of fact with regard to technical compliance

* = Judge of Fact with regard to start procedure / false starts

\$ = Judge of Fact with regard to circuit limits

+ = Judge of fact with regard to drivers' intoxication levels

* = Judge of Fact with regard to race times, lap times and race order over start / finish line

> = Judge of fact with regard environmental noise

® = As per the Lap scoring / timekeepers work rota

COV = Judge of fact and NatSKA escalation point for all Covid Controls

NatSKA Season 2022

RACE ENTRIES

Entries open **17th APRIL 2022.**

Teams need to have their entries posted on the NatSKA online entry system by **WEDNESDAY 27th April 2022 @ 21:00.**

Please ensure that you allow sufficient time to resolve any access issues in advance of the entry closing time. Entries not received until after the closing time as a result of access issues will be classified as LATE. Any access issues please address directly to entries@natska.co.uk

Any changes must be notified via email to entries@natska.co.uk by **Friday 29TH April 2022 @ 21:00** and payment must be received by noon on **Monday 2nd May 2022.**

Withdrawals must be notified by **Thursday 28th April @ 21:00** to claim the entry fee as a credit against your next meeting (no refund after this date).

Late entries made prior to the event but post entry closure will be run off the back of the grid. When the grids or meeting is full, karts will be placed on a waiting list.

Parental consent forms for all drivers are required to be lodged on the NatSKA Entries system in advance in accordance with the prescribed naming convention.

This should be completed a minimum of 5 days prior to the event by uploading a pdf document to the NatSKA Entries system. Both parent consent and Medical Data Forms must be lodged in this way.

Remember only the Official NatSKA Form will be accepted. No form on the system means no Practice or Race for that driver!

Any withdrawals as a result of Covid infection must produce evidence of a positive Covid Test (Lateral Flow / PCR notification)

We do request that you monitor your own health and wellbeing, stay aware of potential COVID-19 symptoms, and do not attend the event if you suspect any illness.

Please be respectful of personal choices to use PPE, but prepared to wear a mask if instructed to do so by an official (or in the confines of Race Control / Scrutineering).

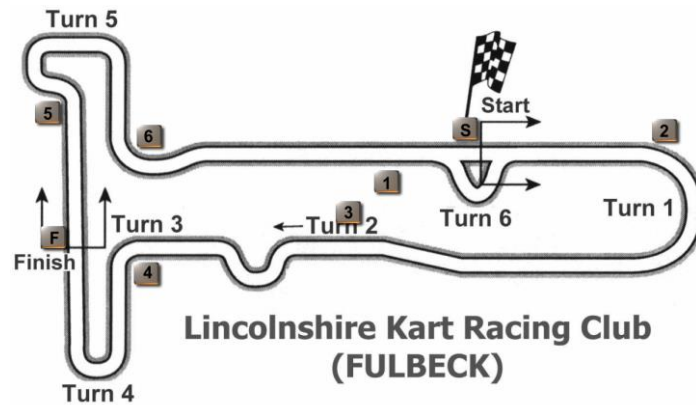
NatSKA Season 2022

Fulbeck

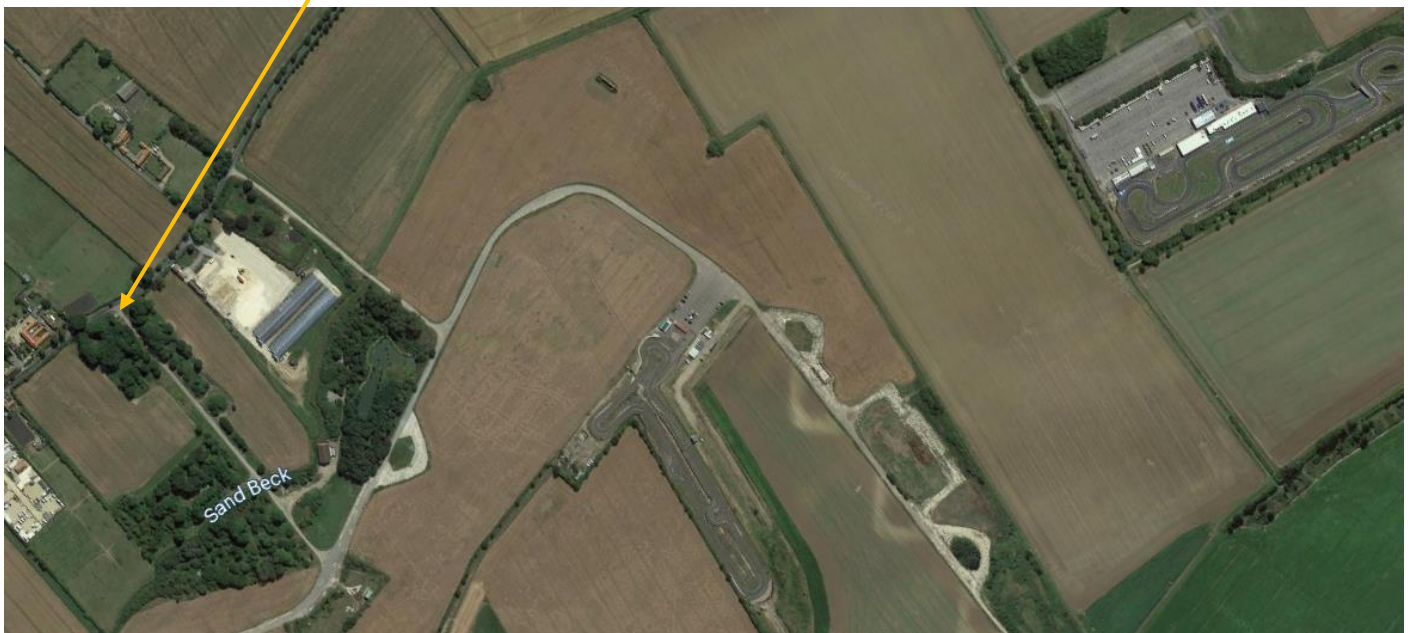
Sat Nav

The circuit postcode is NG32 3JE. The circuit owners say that if you are coming from the north you reach Fulbeck first – if you are coming from the south then you reach PFi first.

More details can be found on the club website: <http://www.lkrc.com/>



WHAT 3 WORDS: ///merely.advancing.horns



Available circuit maps

[Driving Technique \(fulbeckkartclub.co.uk\)](http://fulbeckkartclub.co.uk) (this link includes a track map and some helpful hints)

Covid Safe

The following areas are fully controlled and must not be entered at any point unless invited by an official and a suitable face covering is mandatory without exception:

Scrutineering Area (Parc Ferme)

Race Control

Page 4 of 8

Posting Time : **21:49**

NatSKA Season 2022

WE CAN ARRANGE FOR THE CIRCUIT TO BE OPEN FROM FRIDAY AFTERNOON BUT THIS MUST BE ARRANGED BY 25TH APRIL THROUGH chairman@natska.co.uk
(Please note: in order to facilitate this someone from NatSKA must be at the circuit by midday on Friday. If we cannot meet this timescale then the circuit will not be open from 7.00am on Saturday morning).

TIMETABLE - (Provisional and subject to change at any point)

07:15 Scrutineering & Signing on
09:00 End of Scrutineering
08:45 Marshals' briefing
08:55 Team Leaders' Briefing
09:00 Drivers Paddock Safety Briefing followed by Novice safety briefing
09:30 Engine running time (in accordance with NatSKA Handbook)
09:35 Karts for practice on grid (STRICTLY NO ENGINES TO BE RUN BEFORE 09:30am)
09:40 Start of Practice – min 3 laps per driver
10:40 Start of Racing (after practice whichever is soonest)
17:20 End of Racing

Results & Presentations 30mins after the last results are posted

Emergency Practice – Application must be made to grid marshal who will check with race control and timing

Karts who have failed to complete 3 laps practice will be notified via the NatSKA Public Address WhatsApp group. Please make sure you are a member of this group to receive communications.

If you are asked to attend for emergency practice via WhatsApp group, please ensure that you do it... this means that your transponder may have failed and we have been unable to verify that you have completed 3 laps practice.

Trophies and medals will be awarded in line with the number of class entries

If time permits a separate event will be run that will not count towards the main results of the meeting.

NatSKA Season 2022

ORDER OF PRACTICE - (Provisional)

All Teams must have access to their own printed copy of the grids

- Classes 14 & 12
- Class 7 & 8
- Class 11
- Class 15
- Class 11 & 14 Novice
- Class 1 & 4 and associated Novices
- Emergency practice 1 (LOW POWER)
- Emergency practice 2 (HIGH POWER)
- Emergency Practice 3 (Cadet)

Notes:

- Provisional and subject to change at any point, additional novice sessions may be run at the end of the day if time allows
- Racing will be over four heats with the combined score of three heats to count
- Trophies and certificates will be awarded in line with the number of class entries
- Grid positions are to be determined at random (and then by rotation)
- Prize giving will take place 30 minutes after the last result is posted
- If time permits a separate event will be run that will not count towards the main results of the meeting

Final order to be listed on the day.

Some classes may be separated, or further combined if relative performance and NatSKA rules permit. The organisers reserve the right to exclude a class if there are insufficient numbers to make up a grid.

All Novice Drivers racing from the back of the grid in the qualified class MUST carry an additional yellow plate bearing the letter N on the rear of their kart during all Sessions. Novices in novice only practice sessions MAY carry this plate (where the kart is also being used by other drivers racing from the back of the grid) but are not required to do so. During novice only practice sessions racing is not permitted.

GRID AREA / PROCEDURE

Drivers must wear their crash helmet when entering the grid area.

Karts may proceed onto the dummy grid (providing it is clear and ready to accept the next grid of competitors) whenever they feel that they are ready.

When there is 3 minutes + 1 lap of the preceding race remaining the grid will be closed. Any kart not on the ground in the correct grid slot or under the control of a Grid marshal at this point will be moved to the back of the grid.

NatSKA Season 2022

Once the kart has entered the dummy grid area for all heats including practice the driver/mechanic must position it on to their grid position or as directed by the grid marshal.

Adjustments will be allowed on the Dummy Grid in line with current NatSKA Rulebook. Any infringement of this rule will result in the competitor being placed at the rear of the grid for that race

Trolleys must be removed from the grid and placed in the trolley park

Failed Start Line

Please note that any kart that is still being pushed beyond the failed start line, which subsequently "fires" and takes part in the race MAY BE EXCLUDED FROM THAT HEAT.

Visual Warnings

These will be displayed at the Start / Finish line. Please ensure that you are aware of its location.

Scrutineering / Final Heat

Anyone who wishes to not complete the final heat must inform the scrutineer and leave their kart in parc ferme after the penultimate heat. Failure to do so may result in exclusion from the meeting.

Novice of the Day (low power classes)

Novice of the day will be chosen by Circuit officials on the day and co-ordinated by the Start / Finish team, looking at improvement, race craft, race times and consistency. The circuit official's decision is final and no appeal will be allowed.

Kart mounted Cameras

Any driver who has a kart mounted camera must ensure that the top of the camera sits below the bottom of the front Nassau panel number plate and must not obscure any part of the number plate. For the avoidance of doubt Camera or video devices are not sanctioned or controlled by NatSKA and cannot be used by a driver or team in judicial matters although the Clerk of the course can request to see footage. Footage can be commandeered by NatSKA in the event of a serious accident to aid Motorsport UK investigations.

Circuit Cameras

If suitable circuit cameras are available, the Clerk of the Course may choose to utilise the cameras in any judicial investigations

Environmental Sound Levels

In line with Motorsport UK permit conditions sound checks will be recorded, any kart found to exceed the maximum sound level may be excluded from the meeting

All teams please:-

- Follow the Covid Safe controls
- Park your vehicles sensibly to allow social distancing and remove cars & vans that are not essential for kart maintenance into the car park
- Volunteer to help if asked

NatSKA Season 2022

- When applicable ensure that the Marshal Post you are responsible for is occupied at all times with an experienced, responsible person
- Leave the facilities as you would wish to find them
- **Novices for observation:**
 - Classes 11 / 14 novice and class 4 novice – for team leader observation and signature
 - Upgrading novices racing from the back of the grid – please ensure that the signature card is in Race Control in the correct folder for observation by the Motorsport UK Steward
 - **Marshalling signatures** – please space out your novice marshals in order to ensure that they get the most out of their sessions. Please be aware that the quickest way to access the circuit is:
 - Posts 1 & 3 – near the start / finish line
 - Post 2 – along the outside of the circuit behind the timing tower
 - Posts 4 & 6 – from the dummy grid
 - Post 5 – around the outside of the circuit past scrutineering

Remember:-

- All attendees **MUST SIGN ON electronically prior to the event**; failure to do so will mean **you are not insured**
- **ANYONE going marshalling must sign on the appropriate declaration (as an Official of the Meeting)**
- Karts can **only be collected** from the circuit **when** teams are **instructed to do** so by the Paddock Marshal / Chief Course Marshal at the correct time (please note the majority of recovery will take place from the dummy grid area).
- Pets must be kept under control at all times. Dogs must be kept on leads and away from the track.
- No scooters, bikes or footballs are allowed at the circuit.
- Team members must not enter the circuit once a race, or practice has started

**RESTARTING IS ONLY ALLOWED IN ACCORDANCE WITH THE NATSKA HANDBOOK
DO NOT BLOCK THE MAIN ROADWAY ON THE APPROACH TO THE CIRCUIT
**NO SMOKING (including e-devices) PERMITTED IN THE FOLLOWING AREAS:
Parc Ferme, Grid / Dummy Grid, Scrutineering, Around Karts and within the confines
of buildings****